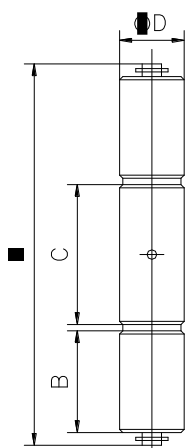




## Панта Estebro® за заваряване кръгла трисекционна 35x175 мм, 391



Cod	Dimens.	A	B	C	ØD		
50	16x100	100	27	35	16	30	4,30
51	20x120	118	32	42	20	20	5,35
52	25x150	150	40	56	25	12	6,40
390	30x175	175	55	55	30	12	11,40
391	35x175	175	55	55	35	6	7,80

**Family:** Three section hinge

**Material:** 11SMn30 steel

**Maximum weight supported:** According to study

**Description:** Mechanized component which is installed on a metallic overhead door allowing its opening and closing. It must be welded on door's the folding line. It has two brass washers in order to avoid the friction between both bodies and can be replaced in the case of erosion. All hinges from Ø20 mm on come with grease hole.

Продукт: [Панта Estebro® за заваряване кръгла трисекционна 35x175 мм, 391](#)

Категория: [Панти за заваряване](#)

Бранд: [Estebro®](#)

Категория бранд: [Панта Estebro®](#)